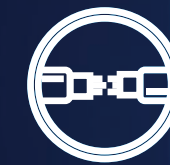
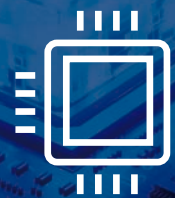
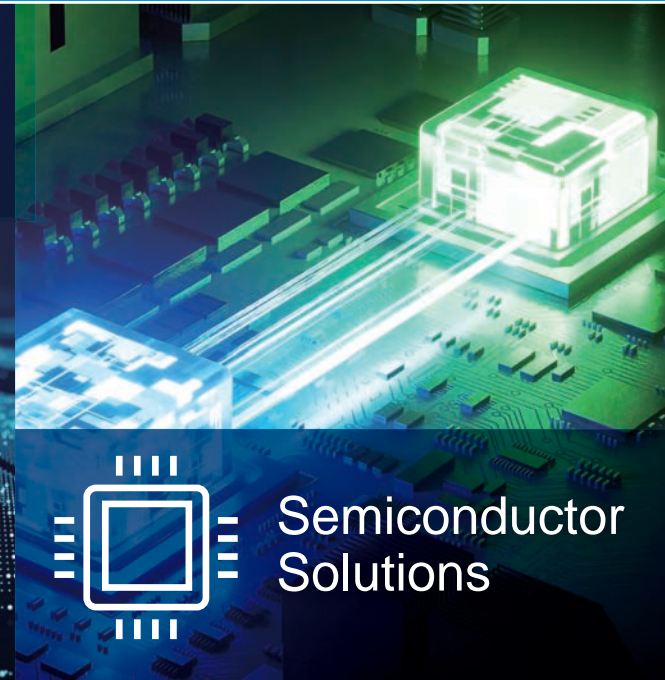




www.gmtglobalinc.com



Optical
Communication
Solutions



Semiconductor
Solutions

semiconductor and
optical communications
industries solutions
【equipment】



Global Operation Headquarter
No. 357, Sec. 1, Yaofeng Rd.,
Puxin Township, Changhua County
513004, Taiwan
TEL : +886-4-8282825
FAX : +886-4-8282228

Xiushui Office
No.3, Ln. 34, Minzhu St., Xiushui Township,
Changhua County ,504009, Taiwan
TEL : +886-4-7688327
FAX : +886-4-7688314

GMT Europe GmbH
Am Detershof 20
26655 Westerstede
Germany
TEL : +49(0)4488 761 746
Website : <https://gmt-europe.de/>
Email : sales@gmt-europe.de

Dongguan Ding Qi Intelligent Automation Technology Ltd.
No.8 Factory ,SHUI-BIAN Industrial Zone, Hengli Town,
Dongguan City, Guangdong Province, China
TEL : 4007706066

Dongguan Sales Office
1109, Building B1, Tian'an Digital Mall, Huangjin Middle Road,
Nancheng District, Dongguan, Guangdong Province, China
TEL : + 86-769-8671-8568

Kunshan Sales Office
Room 805 (Po Yu Plaza), 8F, Building 99, No.335, Chang Jiang
North Road, Kunshan City, Zhoushi Town, Jiangsu Province, China
TEL : + 86-512-5706-8646

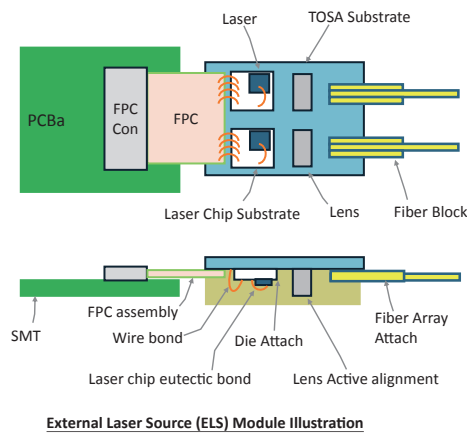
Wuhan Office
C1-901-2, Lianxiang Enterprise Center, Jiangxia District, Wuhan
City, Hubei Province, China
TEL : + 86-27-8755-1037

Tianjin Office
Room 1006, Ronghui Building, No. 58, Dongting Road, Second
Street, Development Zone, Binhai New Area, Tianjin, China
TEL : +86-13-30-211-7506



Tx FAU Bonder (Passive Bonding)

Product illustration



Station details

Station	Function	Key Point
Tx FAU Bonding	<ul style="list-style-type: none">High-Definition CCD RecognitionFixed the FAU after Coupling by UV Glue	<ul style="list-style-type: none">High-Precision Vision CCD to Align X/Y/Z PlaneOnline Monitoring and Data Uploading to Database

Major equipment

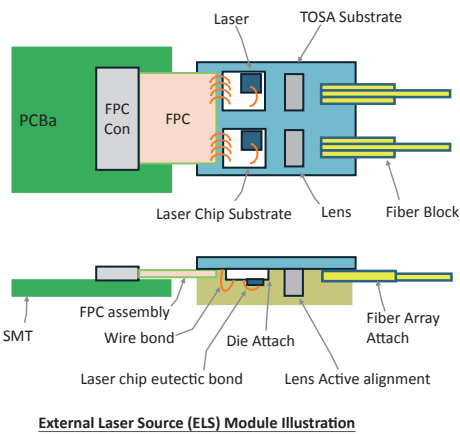
Equipment	Key Parameter
Bonding Machine	<ul style="list-style-type: none">X/Y/Z Resolution: 10nmBonding force : 5gFCycle Time: < 130 sec/pcs (No cover UVtime)

Specification Sheet

Type	Item	Parameter
Facility Requirement & Appearance	Power Input	220V 50/60Hz
	Pneumatic System	Compressed air flow >2LPM; System supply pressure 0.6MPa-0.7MPa
	Vacuum System	Vacuum gauge reading ≤ -80kPa
	Environmental Conditions	Temperature: 15-35°C; Humidity: standard 70% at 32°C; Cleanliness level: 100k Class
	Machine Dimensions	1000mm×1200mm×1800mm
	Equipment Weight	850-950kg
Safety Protection	Product Safety Protection	Contact grounding treatment
	ESD Protection	Ion fan for electrostatic removal
	Software Protection	Mistake proofing
	Equipment Protection	Collision prevention, axis stroke limit, distance sensor
Loading/ Unloading Module	Operator Safety Protection	Protective goggles
	PCB Tray (5pcs, customizable)	Linear module + servo motor
Dispensing Module	FA Tray (5pcs, customizable)	Linear module + servo motor
	Structure Configuration	Three-axis: XY axis linear step motor + Z axis servo motor + ball screw module(supporting dots and lines); Positioning accuracy: 5μm
UV Curing System	Dispensing system	Musashi high-precision dispensing machine, single-point (needle), Standard 3mL capacity, other volumes customizable
	Configuration and Parameters	Dual LED light source, pneumatic shutter, wavelength 365nm
Bonding system	Clamping	Electric gripper and vacuum suction
	Gantry System	4 axis: XY linear step motor, Z servo motor with ball screw, θ arc swing: 0.5um repeat positioning accuracy
	Visual System	Automatic alignment; 500M CCD; field of view: 10.6 × 8.9mm; resolution : 2.7μm; depth of field: 1.6mm
	Bonding Force Control	Pressure sensor monitoring: 5gF

Dual LD Lens Active Aligner

Product illustration



Station details

	Function	Key Point
Lens Coupling	<ul style="list-style-type: none">Dual Lens CouplingLens Align with PICFixed the Lens after Coupling by UV Glue(Include Glue Fixed and UV Curing)	<ul style="list-style-type: none">TX PowerHigh-Precision Stage to Align X/Y/Z PlaneSimultaneous Coupling of Two LensOnline monitoring and Data Uploading to Database

Major equipment

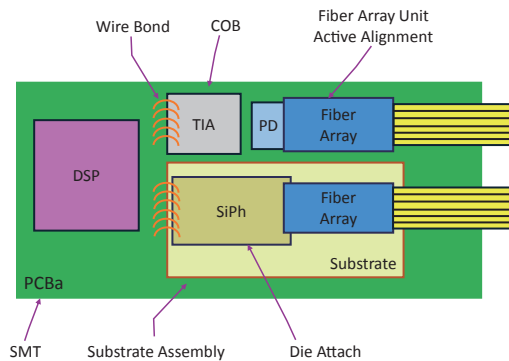
Equipment	Key Parameter
Coupling Machine	<ul style="list-style-type: none">X/Y/Z Resolution: 10nmX/Y/Z Repeatability Accuracy : ± 50nm

Specification Sheet

Type	Item	Parameter
Facility Requirement & Appearance	Power Input	220V 50/60Hz
	Pneumatic System	Compressed air flow >2LPM; System supply pressure 0.6MPa-0.7MPa
	Vacuum System	Vacuum gauge reading ≤ -80kPa
	Environmental Conditions	Temperature: 15-35°C; Humidity: standard 70% at 32°C; Cleanliness level: 100k Class
	Machine Dimensions	1200mm×1000mm×1800mm
	Power Input	220V 50/60Hz
	Equipment Weight	1100-1250kg
Safety Protection	Product Safety Protection	Contact grounding treatment
	ESD Protection	Ion fan for electrostatic removal
	Software Protection	Mistake proofing
	Equipment Protection	Collision prevention, axis stroke limit, distance sensor
	Operator Safety Protection	Protective goggles
Alignment Module	Operating module	Dual 6-axis System
	Workpiece Clamping	Electric clamp, vacuum suction fixation
	Single-Axis Repeatability	±0.05μm
	XYZ Drive Mechanism	Step motor with ball screw
Dispensing Module	θx	Manual adjustment
	High-Precision Alignment Stage θy/θz	Automatic stage Repeatability: ±0.001°
	Structural Configuration	Pneumatic extension dispensing supply (XY manual stage position fixation)
Device Biasing Method	Dispensing Method	Bottom-side dispensing
	Dispensing system	Dual dispensers; Musashi high-precision single-Point dispenser (needle type), Standard 3mL capacity, other volumes customizable
Loading/ Unloading Module	Socket connection	Automatic alignment
	Lens loading tray	32pc dual lens tray
UV Curing System	PCB	Single PCB tray with Pneumatic clamping
	UV type	HOYA LED light source×4set; Wavelength 365nm
Visual system	Operate axis	6-axis, integrated in the left coupling axis
	Number of Camera	2
	Visual recognize	Automatic alignment : 5 Megapixel CCD : Visual range 5.6×4.7mm : Resolution : 1.4 μm : Depth 0.3mm
Alignment System	Camera axis	XYZ 3 axis: step motor with ball screws
	Alignment stability (Average Variance value)	< ±5%
	Level adjustment	Automatic alignment module
	High adjustment	Pressure sensing
Software	CT	< 200 sec/channel (Not including curing time, Depending on application scenario)
	Programming language	LabVIEW
	Data binding	Capable to record production orders, product codes
	Storage	Production data can be saved
Power Meter	Program calls	Program base can save multiple alignment programs to fit different alignment process
	Type	Keithley E3646A (Can be modified according to requirements)
	Voltage/Current range	Keysight (0-8V,3A/0-20V, 1.5A)
	Measure resolution	Voltage: <0.05% +5mV / Electric current <.15% + 5mA

Rx FAU Aligner

Product illustration



Station details

Station	Function	Key Point
FA Coupling	<ul style="list-style-type: none">• RX FA Coupling• RX FA Align with PD• Fixed the FA after Coupling by UV Glue (Include Glue Fixed and UV Curing)	<ul style="list-style-type: none">• RSSI ADC• High-Precision Stage to Align X/Y/Z Plane• Online Monitoring and Data Uploading to Database

1.6T SiPh Transceiver Module Illustration

Major equipment

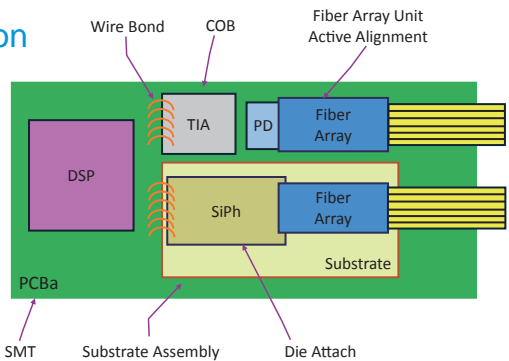
Equipment	Key Parameter
Coupling Machine	<ul style="list-style-type: none">• X/Y/Z Resolution: 10nm• X/Y/Z Repeatability Accuracy : ± 50nm

Specification Sheet

Type	Item	Parameter
Equipment Dimensions & Power	Power Input	220V 50/60Hz
	Pneumatic System	Compressed air flow >2LPM; System supply pressure 0.6MPa-0.7MPa
	Vacuum System	Vacuum gauge reading ≤ -80kPa
	Environmental Conditions	Temperature: 15-35°C; Humidity: standard 70% at 32°C; Cleanliness level: 100k Class
	Machine Dimensions	1150mm×1000mm×1850mm
	Equipment Weight	850-950kg
Safety Protection	Product Safety Protection	Contact grounding treatment
	ESD Protection	Ion fan for electrostatic removal
	Software Protection	Mistake proofing
	Equipment Protection	Collision prevention, axis stroke limit, distance sensor
	Operator Safety Protection	Protective goggles
Alignment Module	Operating module	6-axis module
	Workpiece Clamping	Electric clamp, vacuum suction fixation
	Single-Axis Repeatability	±0.05μm
	XYZ Drive Mechanism	Step motor with ball screw
	θx	Manual adjustment
	High-Precision Alignment Stage θy/θz	Automatic stage Repeatability: ±0.001°
Dispensing Module	Structural Type	Pneumatic extension dispensing supply (XY manual stage position fixation)
	Dispensing Method	Bottom-side dispensing
	Dispensing system	Musashi high-precision dispensing machine, single-point (needle), Standard 3mL capacity, other volumes customizable
Device Biasing Method	Socket connection	Automatic alignment
Loading/Unloading Module	FA Tray	Single MPO dual FA
	PCB Tray	Single PCB tray with Pneumatic clamping
UV Curing System	UV type	HOYA dual LED light source; Wavelength 365nm
	Operate axis	XYZ axis with air powered cylinder
Visual System	Number of cameras	2
	Visual recognize	Automatic alignment : 5 Megapixel CCD : Visual range 5.6×4.7mm : Resolution: 1.4 μm : Depth of field: 0.3mm
	Camera axis	XYZ 3 axis: step motor with ball screws
Alignment System	Alignment stability (Average Variance value)	< ±5%
	Level adjustment	Automatic alignment module
	High adjustment	Pressure sensing
Software	CT	< 180 sec/channel (Not including curing time, Depending on application scenario)
	Programming language	LabVIEW
	Data binding	Capable to record production orders, product codes
	Storage	Production data can be saved
Power Meter	Program calls	Program base can save multiple alignment programs to fit different alignment process
	Meter type	Keysight E3646A(Can be modified according to requirements)
	Voltage/Current range	Keysight (0-8V,3A/0-20V,1.5A)
Laser Source	Measure resolution	Voltage: <0.05% +5mV / Electric current <.15% + 5mA
	Laser type	Santec(TSL-570A-P) (Can be modified according to requirements)
	Performance	200 nm/s quick scan
		High precision range(± 2 pm) & resolution(0.1 pm)
		The sealed cavity ensures the stability of each wavelength
Laser Power Meter	Type	Multiple wavelength options from 1240 to 1680 nm
		Adjust scan range 10GHz
	Sensor performance	Santec MPM-220 series (Can be modified according to requirements)
Laser Power Meter	Sensor performance	840 - 1700 nm · -80 - +8 dBm customize option

Tx FAU Aligner

Product illustration



Station details

Station	Function	Key Point
FA Coupling	<ul style="list-style-type: none">• TX FA Coupling• TX FA Align with PIC• Fixed the FA after Coupling by UV Glue (Include Glue Fixed and UV Curing)	<ul style="list-style-type: none">• RSSI ADC• High-Precision Stage to Align X/Y/Z Plane• Online Monitoring and Data Uploading to Database

1.6T SiPh Transceiver Module Illustration

Major equipment

Equipment	Key Parameter
Coupling Machine	<ul style="list-style-type: none">• X/Y/Z Resolution: 10nm• X/Y/Z Repeatability Accuracy : ± 50nm

Specification Sheet

Type	Item	Parameter
Equipment Dimensions & Power	Power Input	220V 50/60Hz
	Pneumatic System	Compressed air flow >2LPM; System supply pressure 0.6MPa-0.7MPa
	Vacuum System	Vacuum gauge reading ≤ -80kPa
	Environmental Conditions	Temperature: 15-35°C; Humidity: standard 70% at 32°C; Cleanliness level: 100k Class
	Machine Dimensions	1150mm×1000mm×1850mm
	Equipment Weight	850-950kg
Safety Protection	Product Safety Protection	Contact grounding treatment
	ESD Protection	Ion fan for electrostatic removal
	Software Protection	Mistake proofing
	Equipment Protection	Collision prevention, axis stroke limit, distance sensor
	Operator Safety Protection	Protective goggles
Alignment Module	Operating module	6-axis module
	Workpiece Clamping	Electric clamp, vacuum suction fixation
	Single-Axis Repeatability	±0.05μm
	XYZ Drive Mechanism	Step motor with ball screw
	θx	Manual adjustment
	High-Precision Alignment Stage θy/θz	Automatic stage Repeatability: ±0.001°
Dispensing Module	Structural Type	Cylinder retraction with top supply (Fixed Position for XYZ Manual module)
	Dispensing Method	Top spot glue dispensing
	Dispensing system	Dual dispensers; Musashi high-precision single-Point dispenser (Syringe type), Standard 3mL capacity, other volumes customizable
Device Biasing Method	Socket connection	Automatic alignment
Loading/Unloading System	FA Tray	Single MPO dual FA
	PCB Tray	Single PCB tray with Pneumatic clamping
UV Curing System	UV type	HOYA EXECURE-4000D
	Operate axis	XYZ axis with air powered cylinder
Visual System	Number of cameras	1
	Visual recognize	Automatic alignment : 5 Megapixel CCD : Visual range 5.6×4.7mm : Resolution: 1.4 μm : Depth of field: 0.3mm
	Camera axis	XYZ 3 axis: step motor with ball screws
Alignment Module	Alignment stability (Average Variance value)	< ±5%
	Level adjustment	Automatic alignment module
	High adjustment	Pressure sensing
Software	CT	< 310sec/channel (Not including curing time, Depending on application scenario)
	Programming language	LabVIEW
	Data binding	Capable to record production orders, product codes
	Storage	Production data can be saved
Power Meter	Program calls	Program base can save multiple alignment programs to fit different alignment process
	Meter type	Keysight E3646A (Can be modified according to requirements)
	Voltage/Current range	Keysight (0-8V,3A/0-20V,1.5A)
Laser Source	Measure resolution	Voltage: <0.05% +5mV / Electric current <.15% + 5mA
	Laser type	Santec MPM-220 + MPM-211×2 (Can be modified according to requirements)
	Type	840 - 1700 nm · -80 - +10 dBm
		1250-1650 nm · -80 - +10 dBm